

# Joint Privacy Notice

**On Behalf Of:** Oklahoma Farm Bureau Mutual Insurance Company and AgSecurity Insurance Company. When you see the words we, us, or our within this *Joint Privacy Notice*, you should understand that those words include Oklahoma Farm Bureau Mutual Insurance Company and AgSecurity Insurance Company.

## Our Commitment To Safeguarding Your Privacy

This *Joint Privacy Notice* is being provided to you to inform you of our practices and procedures regarding the sharing of nonpublic personal information. Nonpublic personal information is personally identifiable financial information about you, your family, or your household that we may obtain directly from you, that we may obtain as a result of our business dealings with you, or that we may obtain from any other source.

We do not engage in the practice of disclosing your nonpublic personal information to nonaffiliated third parties other than, as necessary, to provide quality insurance services to our customers. For instance, we do not sell your name, address or telephone number to telemarketers or to direct mail solicitors. We do not engage in "list-selling," and we do not offer your personal information to publishing houses, retailers, or coupon companies.

During the continuation of our customer relationship with you, we will also provide you with a copy of this *Joint Privacy Notice* at least once during each calendar year as part of a regular mailing, such as within a billing or a renewal notice or with a policy and at any time that you request in writing a copy of this *Joint Privacy Notice*. Further, because of federal and state laws, regulations and business practices can change at any time, we may revise this *Joint Privacy Notice* accordingly. Once you cease to be a policyholder, we will stop sending you annual privacy notices.

## Information We May Collect & Use

During the course of reviewing your application for insurance coverage and deciding whether or not to underwrite the insurance policy for which you have applied, and, if we issue you a policy, during the course of providing services to you as required by the policy, we collect and evaluate information from the following sources:

- Information we receive from you on applications or other forms;
- Information about your transactions with us, our affiliates or others;
- Information we receive from consumer reporting agencies; and
- Information we receive from state or federal agencies.

It is important for us to collect and use this information to properly provide, administer and perform services on your behalf. We could not provide optimum service to you without collecting and using this information.

## Information We May Disclose

We regard all of your personal information as confidential. Therefore, we do not disclose any nonpublic personal information about our customers or former customers to anyone except as permitted by law. In the course of conducting our business dealings, we may disclose to other parties certain information we have about you. These disclosures are only made in accordance with applicable laws, and may include



## O K L A H O M A FARM BUREAU MUTUAL INSURANCE COMPANY AG SECURITY INSURANCE COMPANY

disclosures to reinsurers, administrators, service providers, consultants and regulatory or governmental authorities. Furthermore, certain disclosures of information will be made to your Farm Bureau personnel authorized to have access to your personal information for the purpose of administering your business and providing services to you.

We may disclose the following categories of information to companies that perform services on our behalf or to other financial institutions with which we have joint marketing agreements:

- Information we received from you on applications or other forms, such as your name, address, Social Security number, county Farm Bureau membership number, assets, income and beneficiaries;
- Information about your transactions with us, our affiliates or others, such as your policy coverage, premium, loss history and payment history; and
- Information we receive from a consumer reporting agency, such as your creditworthiness and credit history.

We may disclose nonpublic personal information about you to the following types of third parties:

- Financial service providers, such as life insurers, automobile insurers, mortgage bankers, securities broker-dealers, and insurance agents;
- Nonfinancial companies, such as retailers, direct marketers, airlines, and publishers; and
- Others, such as nonprofit organizations.

These entities with which we share personal information are required to maintain the confidentiality of that information. We do not authorize these parties to use or disclose your personal information for any purpose other than for the express purpose of performing work on our behalf or as required or permitted by law.

## How We Maintain The Confidentiality & Security Of Your Information

We carefully restrict access to nonpublic personal information to our employees, our independent contractor insurance agents, our service contract providers, and our affiliates and subsidiaries. The right of our employees, our independent contractor insurance agents, our service contract providers, and our affiliates and subsidiaries to further disclose and use the information is limited by our employee handbook, agent's manual, applicable law, and nondisclosure agreements where appropriate. We maintain physical, electronic, and procedural safeguards that comply with federal and state law to guard your nonpublic personal information.

## Your Opt-Out Right

We reserve the right to disclose nonpublic personal information about our customers to a nonaffiliated third party. However, if you prefer that we not disclose nonpublic personal financial information

about you to nonaffiliated third parties, you may opt out of those disclosures, that is, you may direct us not to make those disclosures (information sharing which is permitted by law includes sharing information with our affiliates and non-affiliates about our transactions or experiences with you for business, administrative and other legal purposes). If you wish to opt out of disclosures to nonaffiliated third parties, you may choose one of the following options:

1. Complete the opt-out form on our web-site located at [okfarminsurance.com](http://okfarminsurance.com) OR
2. Mail or Fax the attached opt-out form to us. Fax # 405-523-2581.

Your opt-out form must reach us within 30 days of your receipt of our privacy notice. Your opt-out request will take effect on the 7<sup>th</sup> day following receipt of your request, to allow for notification to all applicable affiliated or nonaffiliated third parties. If you share your account with another person, either of you may opt-out of disclosures (other than disclosures permitted by law) for both of you. Please indicate on the Opt-Out Notice form if you are opting-out for one or both of you.

## Conclusion

If you have any questions or comments concerning this *Joint Privacy Notice* or our privacy standards and procedures, please write us at Post Office Box 53332, Oklahoma City, Oklahoma 73152-3332. Our functional regulator is the State of Oklahoma, Department of Insurance. If we cannot resolve your concerns or answer your questions, feel free to contact our regulator.

This *Joint Privacy Notice* describes our company's privacy policy and practices in accordance with the Gramm-Leach-Bliley Act, 15 USC §6801, and with various state-specific privacy/financial information laws and regulations in the states in which our company does business.

Copyright © 2004 Oklahoma Farm Bureau Mutual Insurance Companies  
2501 N. Stiles, Oklahoma City, OK 73105

## OPT-OUT NOTICE

I prefer that you do not disclose nonpublic personal financial information about me to nonaffiliated third parties, (other than disclosures permitted by law, which include sharing information with our affiliates & nonaffiliates about our transactions or experiences with you for business, administrative and other legal purposes). In order for an opt-out notice to be valid, all \*required information must be completed.

Clip & mail this form to:

**OFBMIC, c/o Opt-Out Notice**  
P.O.B. 53332 • Oklahoma City, OK 73152-3332

\*Name: \_\_\_\_\_

\*Phone Number: \_\_\_\_\_

\*Address: \_\_\_\_\_

\*City: \_\_\_\_\_

\*Email: \_\_\_\_\_

\*Policy Number: \_\_\_\_\_

\*Membership Number: \_\_\_\_\_

## NSP Board votes to proceed with sorghum checkoff

At their summer board meeting, the National Sorghum Producers (NSP) Board of Directors voted unanimously to proceed with the process of creating a national sorghum checkoff to fund critical research for sorghum producers.

"Like many farmers, I need sorghum in my crop rotation," said NSP President Greg Shelor. "But to increase profitability, we have some basic needs like better grass and weed control technology. We also need to increase our yields."

In May, Shelor appointed NSP President-Elect Dale Murden to serve as Chairman of the National Sorghum Checkoff Committee. The committee, made up of producers and state sorghum staff, was charged with the task of assessing if a national sorghum checkoff would help meet critical producer needs. The committee was asked to offer its recommendations at the August board meeting held in Lubbock, Texas.

"After several meetings, phone calls and a lot of research, our committee felt that a national sorghum checkoff would help producers across the country to realize better

returns and profitability through a more focused research approach," said Murden. "Profitability is certainly what drives producers and what will drive the priorities of a national sorghum checkoff."

NSP CEO Tim Lust said that the NSP board has been evaluating the possibility of a national sorghum checkoff for quite some time. "If we can meet our most pressing needs, producers will continue to see expanded opportunities for sorghum. There is substantial growth in the forage sorghum market and with the utilization of sorghum for ethanol production."

Lust said that there is a need to increase sorghum's fermentable, extractable sugars to compete with other feedstocks utilized in ethanol production. He also said with the sorghum genome being fully sequenced soon, it will be critical to exploit this scientific breakthrough to help sorghum producers become more productive and profitable in the future.

Directors on the NSP board are now getting feedback from their sponsoring organizations to bring recommendations forward.



**COMPANY'S TOP ADJUSTER** – Shannon Tice, an adjuster at the Davis District Claims office, was named Oklahoma Farm Bureau Mutual Insurance Company Adjuster of the Year in August. Claims Vice President Richard Newberry announced Tice's selection during the annual Claims Conference at Tanglewood Resort on Lake Texoma near Pottsboro, Tex. Tice received a special plaque, monetary award and an expense-paid trip for two to the 2007 Southern Region Claims Conference. Shannon joined the company on Oct. 27, 2003. Tice's selection was based on the claims load, responses from insureds, company loyalty and willingness to help others.



**NEW CALENDAR** – The 2007 OFB Legal Foundation calendar will feature a historical perspective on agriculture to celebrate Oklahoma's Centennial. Enjoy 2007 with photos from across Oklahoma featuring Farm Bureau members and their agricultural operations as well as photos from Oklahoma's agricultural history. The calendars will include important dates for OFB activities for 2007. Calendars can be ordered for \$10 by contacting Sarah Snyder at 405-530-2681.



## Three vie for Achievement Award

Two county Farm Bureaus submitted nominations for consideration as the 2006 YF&R Achievement Award. The award honors the state's top young farm family.

The winner will be announced during the Awards and Recognition Program of the 65th annual meeting of Oklahoma Farm Bureau in Tulsa in November.

The winner receives an expense-paid trip to the 2007 American Farm Bureau Federation convention in Salt Lake City,

Utah. The Oklahoma winner also receives a year's use of a Dodge pickup, the use of a Kubota tractor, \$500 worth of Syngentia crop protection products and other awards.



The nominees, listed in alphabetical order, are:

❖ **Michael and April Clark** of LeFlore County. The couple operates a poultry farm with five broiler houses in addition to running cattle, producing hay and growing wheat and soybeans.

❖ **Cindy Mackey** of LeFlore County. She and her husband, Dan, own and operate three broiler houses that produce approximately 1.6 million pounds of poultry annually and also run 300 cow-calf pairs in addition to growing hay.

❖ **Monte and Danielle Tucker** of Beckham County. The couple has a stocker cattle and commercial cow-calf operation as well as selling and installing livestock water tanks made from used heavy equipment tires.

Comparing Farm Credit to a commercial bank is like comparing apples to oranges.



We take pride in our rural and agricultural lending expertise and commitment to rural Oklahoma. Our loan officers have experience in agriculture and understand the needs of our borrowers. Contact us for your next real estate, home, equipment, livestock or operating loan.



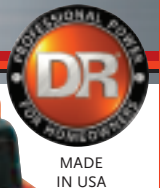
**Farm Credit**  
of  
East Central Oklahoma



www.farmcrediteok.com • 866.AgLender

## PROFESSIONAL POWER DR<sup>®</sup> CHIPPER MAKES BRUSH PILES DISAPPEAR FAST!

- **DEVOURS BRANCHES**  
up to 4-1/2" thick!
- **TRANSFORMS HARD-TO-DISPOSE-OF MATERIALS** — fallen limbs, storm damage, tops from felled trees into useful wood chip mulch!
- **3 TO 4 TIMES FASTER** than ordinary homeowner chipper/shredders which were designed for grinding up garden wastes — *not* heavy chipping.
- **UP TO 19 HP** twin-cylinder engines with electric starting!
- **SOLD FACTORY-DIRECT** at great savings!



Road-Towable, Top-Discharge, even Tractor-Mounted models available!

**FREE SHIPPING**  
Now in Effect!

For a FREE DVD and Catalog Call TOLL-FREE

**1-800-533-5322**

**YES!** Please rush complete FREE DETAILS of the Professional Power DR<sup>®</sup> CHIPPER, including prices and specifications of features and options, and Seasonal Savings now in effect.

Name \_\_\_\_\_ FOK

Address \_\_\_\_\_

City \_\_\_\_\_ State \_\_\_\_\_ ZIP \_\_\_\_\_

E-mail \_\_\_\_\_

**DR<sup>®</sup> POWER EQUIPMENT**, Dept. 53502X  
127 Meigs Road, Vergennes, VT 05491

[www.DRchipper.com](http://www.DRchipper.com)

© 2006 CHP, INC.

**New for Tractor Owners!**



*New 3-Point Hitch, Tractor-Mounted models also available!*



## Poultry companies present \$275,000 check to OSRC

Members of the poultry industry presented a \$275,000 check to the Oklahoma Scenic Rivers Commission in September following a daylong clean up event at the Illinois River. This gift was part of a \$1.1 million donation pledged to the OSRC in 2005 to be paid over four years.

The clean up project included approximately 200 volunteers who floated down the river in canoes and picked up trash along the way. Over fifty of the volunteers were wearing bright green shirts that read "Poultry Industry Does Its Part" as they represented the five poultry companies that made the donation: Tyson Inc., Simmons Foods Inc., George's Inc., Cargill Turkey Production LLC, and Peterson Farms Inc.

The goal of the clean up was to restore the condition of the river after a busy summer season. Volunteers for the cleanup were given lunch, a free T-shirt and a chance to win two "Old Town" kayaks.

Clean up volunteers representing the poultry companies presented a check to Bill Blackard, chairman of the Oklahoma Scenic Rivers Commission at Peyton's Place, the final stop of the cleanup trip.

"We thank the poultry companies for this generous gift. This gift will help improve the facilities as well as the river itself," Ed Fite, OSRC Administrator, said.

Fite stated that the OSRC may receive as much as \$5 million total because of the poultry companies' gift, citing the federal Conservation Reserve Enhancement Program (CREP) that provides \$4 for every \$1 the OSRC spends in specific conservation practices.

"We are happy that we can help beautify the Illinois River," Morrill Harriman, executive vice president of the Poultry Federation, said. "We care about this river, and we care about keeping it clean."

The clean up was sponsored by Armstrong Bank, Georgia-Pacific Paper, Reasor's Food Warehouse, Poultry Community Council, Poultry Partners, STIR (Save the Illinois



Poultry company representatives remove bags of trash picked up along the Illinois River in a daylong clean up event in September. About 200 volunteers floated the river and picked

up trash along the way. At the end of the day, the volunteers presented a \$275,000 check to the Oklahoma Scenic Rivers Commission to help improve facilities as well as the river.





would be directed," Windhaus said.

Other ideas include having your business plan reviewed by a specialist at the nearest Small Business Development Center or by applying for financing from an institution you currently bank with said Windhaus. Also, be sure to decide what type of financing to apply

Grow half-dollar size

# Muscadines & Blackberries

Free Color Catalog Available  
• 200 varieties of fruit, nuts and berry plants •

## 1-800-733-0324

**Ison's Nursery**  
P.O. Box 190 • Brooks, GA 30205  
[www.isons.com](http://www.isons.com)



**HERITAGE BUILDING SYSTEMS®**  
Established 1979

A *Legacy* Built to Last

30' x 40' x 10' ..... \$5,975

40' x 60' x 12' ..... \$10,294

60' x 100' x 16' ..... \$25,886

Mini-Storage

30' x 100' x 8'6" - 10-10' x 30' units \$ 11,200

Since 1979 Heritage Building Systems has been dedicated to providing the finest-quality, pre-engineered steel structures at the lowest possible price.



1.800.643.5555

[www.heritagebuildings.com](http://www.heritagebuildings.com)

for based on each individual business' needs. The requirements for financing through a business loan versus financing via a business line of credit differ greatly, as do the benefits and repayment options.

Farm Bureau Bank can help your business obtain the financial help it needs to grow through their business line of credit. Farm Bureau Bank's business line of credit offers convenient access to working capital up to \$100,000, year-end expense statements to

manage budgets and forecasts, and rewards to help obtain needed capital expenditures. Its low-rate, unsecured, operating line of credit can help you meet all of your cash flow, expansion, and everyday business needs.

Help your business help itself. For more information about a business line of credit through Farm Bureau Bank, or to apply, visit [www.farmbureaubank.com](http://www.farmbureaubank.com) or call 1-800-492-FARM (3276) to speak with a personal banker.

## America's Heartland TV Show Makes Oklahoma Debut November 26

Beginning Nov. 26 Oklahoma television viewers can tune in to the award-winning

America's Heartland, a 30-minute TV program focusing on our nation's agriculture. The show will be broadcast Sunday mornings at 7:30 on OETA stations.

"We are extremely pleased OETA has agreed to carry America's Heartland," said Steve Kouplen, Oklahoma Farm Bureau president. "Today, we are a visually-oriented society and many rely on television for news and information. America's Heartland is an excellent tool for telling agriculture's story."

Now entering its second season of production, viewers can watch stories profiling the iconic American cowboy; follow America's "ag highway" down the mighty Mississippi River; and even travel to Alaska to discover the state's surprising agriculture and aquaculture. Other stories highlight watermelon growers in New Mexico, Florida family farms raising alligators, and how big farms undertake the major risks of planting, nurturing and harvesting their crops.

"The Heartland has so many compelling stories, and we're incredibly excited about bringing those stories to our viewers," said Mike Sanford, executive producer.

America's Heartland is a magazine-style, half-hour series produced by KVIE, a public television station in Sacramento, CA. Sponsors are the Monsanto Company and the American Farm Bureau Federation.

Previously available in Oklahoma only on RFD-TV (satellite dish), Oklahoma

Farm Bureau worked hard to convince OETA officials to carry the show. OETA officials tell us the show will be carried through February, followed by a brief hiatus, and

then return to the airwaves in April.

For more information on America's Heartland, visit [www.americasheartland.org](http://www.americasheartland.org).



## Election Preview

When Oklahomans go to the polls this November, they will be electing a governor, lieutenant governor, attorney general, state treasurer, insurance commissioner and several other statewide officials. In each of five districts, Oklahomans will vote for their representatives in Congress. Incumbent Congressmen Frank Lucas, Tom Cole, Dan Boren, and John Sullivan will each face opposition while the 5th District congressional seat, vacated by Earnest Istook, will come down to a race between Republican nominee and current Lieutenant Governor, Mary Fallin, and Democratic nominee David Hunter.

Earnest Istook stepped down from his post as 5th District Congressman to run against current Governor Brad Henry, who seeks re-election for a second term. The Lieutenant Governor's race has already proven to be an exciting and hotly contested battle as each

party's nominee won run-off elections to get on the November ballot. The top two candidates for Oklahoma's Lieutenant Governor are Republican nominee and current Speaker of the House Todd Hiett, and Democratic nominee and current minority leader in the Oklahoma House of Representatives Jari Askins. Voters can expect to see a lot of time, money and energy put into this Lieutenant Governor's race based in part on the fact that Oklahoma's Lieutenant Governor serves as the President of the Senate and should the Senate come down to a 24 to 24 split between the two political parties, the newly elected Lieutenant Governor would cast the deciding vote.

In other statewide elections, Republican James Dunn seeks to unseat current Attorney General, Drew Edmondson. Incumbent State Treasurer and Democrat Scott Meacham will face opposition from Republican Howard Barnett, Jr. while former State Representative Bill Case runs against current Insurance Commissioner Kim Holland. Candidates for State Auditor and Inspector are incumbent Jeff McMahan, Democrat and Republican Gary Jones. Democrat Sandy Garrett seeks re-election as State Superintendent of Public Instruction and will be challenged by Republican Bill Crozier. Former State Representative Lloyd Fields a Democrat will attempt to unseat State Labor Commissioner Brenda Reneau a Republican. Former Corporation Commissioner, Democrat Cody Graves is challenging current Corporation Commissioner and Republican Bob Anthony.

While a large number of votes come from within Oklahoma and Tulsa counties, many of these hotly contested races could come down to the support of rural voters from all across the state. Agriculture continues to play a big role in Oklahoma's economy and therefore in Oklahoma politics. Through Farm Bureau's traditional grassroots process, the OKAgFund, the political action committee of the Oklahoma Farm Bureau, has chosen to support state candidates seeking House of Representative, Senate and statewide offices. For a complete list of candidates supported by the OKAgFund go to Oklahoma Farm Bureau's web site [www.okfarmbureau.org](http://www.okfarmbureau.org). According to the State Ethics Commission, the OKAgFund ranked number two in contributions to candidates between January 1 and August 7, 2006.

**All Around Service**



**All Around Oklahoma**



America's Dairy Finest

**WISCONSIN CHEESE!**  
**A Wisconsin Farm Bureau Service**

Quantity Ordered	Wisconsin Cheese Variety	Delivered Cost/Box	Total Cost
	Sharp Cheddar – 4-1 lb./box	\$24.95	
	Medium Cheddar – 4-1 lb./box	\$24.35	
	Colby Cheese – 4-1 lb./box	\$24.00	
	Co-Jack – 4 –1 lb./box	\$24.35	
	<b>Variety Pack</b> (1 each of the above)	\$25.50	
	Aged Cheddar – 5 lb. wheel	\$26.25	
	Cheddar Spread (Sharp) – 4-1 lb. tubs	\$22.75	
	<b>Variety of Spreads:</b> 1 lb. each of Sharp Cheddar, Bacon Cheddar, Horseradish and Port Wine	\$23.25	
	<b>Gift Box:</b> (10 oz. Med Cheddar, 10 oz. Colby, 10 oz. Brick, & 2-12 oz. packages, all-Beef Summer Sausage)	\$29.75	
	<b>Total Order</b>		\$

**Shipped Direct by UPS to the Address Provided Below. (Allow 10-14 days for shipping.)**  
Please make check payable to **Wisconsin Farm Bureau Service Cooperative**, and Mail to: PO Box 5550, Madison, WI 53705, Attn. Direct Sales. First-time Customer names will be added to our mailing list and you will receive our "complete line" order form each time an order is placed.

**Name:** \_\_\_\_\_

**Street:**(No PO Box) \_\_\_\_\_

**City: State: Zip Code:** \_\_\_\_\_

**Telephone Number:** \_\_\_\_\_ **County:** \_\_\_\_\_

**Order by Dec. 5, 2005 for Christmas Delivery • Offer expires April 28, 2006**



# ATTENTION: DENTURE SUFFERERS

**If You or Someone You Know  
Wears Dentures. . .**

Then don't even think about going another day as a misinformed victim who wears uncomfortable dentures that move around, pop up or fly out!

If you want to eat your favorite foods again, and never fear or worry when in public ever again, then you must be aware of the **FREE REPORT** that reveals "How To Stop Being A Victim To Wearing Those Uncomfortable And Irritating Dentures!"

To get this insider information, you must call **Toll Free, 24 hour, FREE RECORDED MESSAGE** at:

**1-866-802-4516**

This Report is Free and so is this call!  
**Please call right now while  
this is fresh on our mind!**

## Time For A Fall Fix-Up



**RANCH HAND GRILL GUARDS**  **RANCH HAND TRUCK ACCESSORIES**

**CPL TOOLBOXES** 

**OSBORN PICKUP ACCESSORIES**

Tuttle, OK

**405-381-4491**

**www.osbornpickup.com**

• An Oklahoma farmer owned business •

## Drought aid available for livestock producers



Oklahoma livestock producers have until Nov. 20 to apply for drought aid through the Livestock Assistance Grant Program. Approximately \$6.5 million is available through the program.

Only producers who owned grazing livestock for food production as of March 7, 2006 are eligible, a requirement mandated by the USDA. Cattle, sheep, goats, bison and commercial deer and elk are eligible species.

During a Sept. 26 press conference, Oklahoma Agriculture Commissioner Terry Peach said based on previous participation in similar programs where producers enrolled 13 million head of livestock, the \$6.5 million would be spread thin.

"This works out to about 50 cents per animal unit," Peach said. If you had a hundred cows you would get only \$50."

But officials won't know the exact amount until all applications are completed.

Oklahoma Farm Bureau President Steve Kouplén lamented the small amount but it's better than zero assistance.

"We're grateful for the assistance and more importantly, pleased the government

**Oklahoma Agriculture Commissioner Terry Peach is surrounded by agriculture department employees as he announced a \$6.5 million drought assistance package for livestock producers Sept. 26.**

recognizes the devastating impact this drought has had on rural Oklahoma," Kouplén said.

Application forms are available from the Oklahoma Department of Agriculture, Food, and Forestry website at [www.oda.state.ok.us](http://www.oda.state.ok.us).

Applications are also available at OSU extension offices and Farm Service Agency offices throughout the state.

The application form asks producers to indicate if they were forced to sell livestock due to the drought and if they incurred unusual costs of production for transporting or purchasing hay, feed or water.

"We need this information to satisfy the USDA requirements that these grants to go to producers who suffered financial hardship from the drought," Peach said.

All applications are subject to audit. By federal regulations the maximum payment to any producer is \$10,000.



**STATEMENT OF OWNERSHIP, MANAGEMENT, AND CIRCULATION**

1. Publication Title: Oklahoma Country
2. Publication Number: 1544-6476
3. Filing Date: September 15, 2006
4. Issue Frequency: Published in January, April, July and October.
5. Number of issues published annually: 4
6. Annual Subscription Price: \$1.00 members; \$15.00 non-members
7. Complete mailing address of known office of publication: 2501 N. Stiles, Oklahoma City, Oklahoma County, Oklahoma 73105-3126
8. Complete mailing address of headquarters or general business office of publisher: 2501 N. Stiles, Oklahoma City, Oklahoma County, Oklahoma 73105-3126
9. Full names and complete mailing addresses of publisher, editor, and managing editor: Publisher: Oklahoma Farm Bureau, 2501 N. Stiles, Oklahoma City, Oklahoma 73105-3126 Editor: Mike Nichols, 2501 N. Stiles, Oklahoma City, Oklahoma 73105-3126 Managing Editor: Mike Nichols, 2501 N. Stiles, Oklahoma City, Oklahoma 73105-3126
10. Owner (if owned by a corporation, its name and address must be stated and also immediately thereafter the names and addresses of stockholders owning or holding 1 percent or more of the total amount of stock. If not owned by a corporation, the names and addresses of the individual owners must be given. If owned by a partnership or other unincorporated firm, its name and address as well as that of each individual must be given. If the publication is published by a nonprofit organization, its name and address must be stated.)  
Oklahoma Farm Bureau  
2501 N. Stiles  
Oklahoma City, Oklahoma 73105-3126  
NON-PROFIT CORPORATION.
11. Known bondholders, mortgagees, and other security holders owning or holding 1 percent or more of total amount of bonds, mortgages, or other securities: None
12. Tax Status (For completion by nonprofit organizations authorized to mail at special rates) The purpose, function, and nonprofit status of this organization and the exempt status for federal income tax purposes: Has not changed during preceding 12 months
13. Publication name: Oklahoma Country
14. Issue date for circulation data below: Summer 2006
15. Extent and nature of circulation
  - A. Total no. copies (net press run) (average no. copies each issue during preceding 12 months): 148,640 (no. copies of single issue published nearest to filing date): 155,873
  - B. Paid and/or requested circulation
    1. Paid/requested outside-county mail subscriptions stated on Form 3541 (average no. copies each issue during preceding 12 months): 147,617 (no. copies of single issue published nearest to filing date): 155,873
    2. Paid in-county subscriptions (average no. copies each issue during preceding 12 months): 0 (no. copies of single issue published nearest to filing date): 0
    3. Sales through dealers and carriers, street vendors, counter sales, and other non-USPS paid distribution (average no. copies each issue during preceding 12 months): 0 (no. copies of single issue published nearest to filing date): 0
    4. Other classes mailed through the USPS (average no. copies each issue during preceding 12 months): 0 (no. copies of single issue published nearest to filing date): 0
  - C. Total paid and/or requested circulation (average no. copies each issue during preceding 12 months): 147,617 (no. copies of single issue published nearest to filing date): 155,873
  - D. Free distribution by mail (average no. copies each issue during preceding 12 months): 823 (no. copies of single issue published nearest to filing date): 824
  - E. Free distribution outside the mail (average no. copies each issue during preceding 12 months): 200 (actual no. copies of single issue published nearest to filing date): 200
  - F. Total free distribution (average no. copies each issue during preceding 12 months): 1,023 (no. copies of single issue published nearest to filing date): 1,024
  - G. Total distribution (average no. copies each issue during preceding 12 months): 148,640 (no. copies of single issue published nearest to filing date): 156,897
  - H. Copies not distributed (average no. copies each issue during preceding 12 months): 0 (no. copies of single issue published nearest to filing date): 0
  - I. Total (average no. copies each issue during preceding 12 months): 148,640 (no. copies of single issue published nearest to filing date): 156,897
  - J. Percent Paid and/or requested circulation (average no. copies each issue during preceding 12 months): 99.3% (no. copies of single issue published nearest to filing date): 99.3%

I certify that all information furnished on this form is true and complete. — Mike Nichols



**WESTCHESTER**  
**Foundation**  
**Repair**

**800-833-7437**  
[www.westchesterfoundation.com](http://www.westchesterfoundation.com)  
Family Owned & Operated Since 1977  
Bonded & Insured for Your Protection

**We Save You Time & Money**  
**The System That Works**  
*Residential & Commercial*

- No stress on your surface structure during installation
- No site preparation
- One day service on most homes
- Foundation repair
- Wood floor and slab leveling
- New construction piers
- French drains
- Retaining and basement walls

Ask about our *Transferable Lifetime Plus Warranty*  
*90 Days Same As Cash!*  
References available upon request  
Free estimates to Homeowners

# DOES YOUR BASEMENT or CELLAR LEAK?

## NO EXCAVATING

CALL THE OLD CELLAR MAN NOW!

# 1-800-215-0537

# Home Security

Right now only Oklahoma Farm Bureau members can receive a home security system installed at no charge *plus \$200* to use toward the purchase of any additional equipment. System includes control panel, key pad, 2 door sensors, motion detector, siren, yard signs and full service warranty. Monitoring is required. The fee is \$24.95 per month.

## TOTAL SECURITY CENTER

# 866-321-4177

[www.tssecurity.com](http://www.tssecurity.com)



### Introducing Our New Digital Internet Video Security System

- Remote or local security monitoring from any PC via the Internet.
- Includes Dell Dimension computer and four color cameras.

## Now Only \$1,475 Installed!

# Country Classifieds

## AUTOMOTIVE

'93 Goldwing 1500, candy apple red, Corbin seat and backrest, CB, cassette player, new battery, extra alternator, good tires, helmets with headset, trailer to match. \$6,700. 918-945-7554.

'95 Ford F150 ext. cab, 79K, \$4,500; '88 Ford F150 ext. cab, 144K, \$1,000. 405-743-2241.

'99 Ford Explorer, Eddie Bauer edition, 74K, sharp, \$9,000. 405-282-3677.

'98-00 GMC truck, SUV power programmer, more torque/HP, optimized performance, improved drivability, \$2,000. 405-449-3696.

'04 Dodge 4x4 crew cab, long bed, diesel, 54,000 miles, tinted windows, auto, fully loaded, dark blue, Rhino liner. Want out from under payment, will take payoff of \$26,000. 405-630-4228.

'50 Ford Coupe, runs and sharp, drive it home. Spiro, 918-962-2064.

'01 Dodge quad cab flatbed, 1/2-ton, 2x2, 36K, auto, AC, \$8,950. 918-207-5361.

'02 1-ton Chevy Silverado diesel, 145K, PL/PW, AC, welding bud, excellent condition, \$12,000 OBO. 918-527-8339.

'91 Dodge 15-passenger maxi-van, no seats, 360 motor, famous Dodge tranny, NADA value of \$3,000, will take \$1,500. 2-horse bumper pull trailer, great floor, new tires, escape door, tack storage, \$1,200. 405-784-1376.

'83 Chrysler Fifth Avenue, very good body, needs mechanical repair, good tires, \$225. 580-347-2112.

'98 Lincoln Signature series, leather interior, white exterior, excellent condition. 405-756-4915.

Natural gas powered cars, trucks. Drive for \$1.20 per gallon. Russ Casey, 918-733-4887, gocng.com.

'99 F250 supercab XLT, 7.3L Powerstroke turbo diesel, excellent condition, 58,000 miles, \$18,500 OBO. 405-381-2722.

'73 Chevy pickup, many new parts, classic, runs good, \$2,500. 405-282-1482, 826-1350.

'91 Nissan 240XS, 2-door, maroon, \$2,000 OBO. 918-346-2244.

'29 model A 2-door sedan, completely restored, good condition inside and out, new tires, brakes, runs/drives good. 918-287-2343, cell 918-287-7047.

'81 Ford 1-ton, 400 V8, auto transmission, 6 good tires, Stahl utility bed, cruise, running boards, \$1,175. 580-654-1477.

'74 International pickup, half-ton, long wide bed, to be restored, complete but not running, \$750. 580-654-1477.

'62 Chevy Impala 2-door HT; '59 Ford custom 300 2-door sedan, \$2,500; '82 Ford PU, SWB, \$2,200. 405-672-0048, 822-9208.

Black soft tonneau cover for short wide Dodge, '97 through '01, excellent condition, \$100. 918-284-7258.

'02 Kia SXX, standard, 21,000 miles, AC. 580-563-9470.

307 engine from '81 98 Olds Regency; '86 Pontiac, \$750; '78 Cutlass Supreme, \$1,000; '78 Malibu Classic, \$750. 405-224-1222.

## FARM EQUIPMENT

**SPIDEL WEED WIPER. #1 Herbicide applicator for weed control. All sizes available. Recovers in stock. ATV mounting bracket, Quality carts and Peacock foam marker. www.acrsales.com or 1-800-544-1546 or 405-321-7843.**

44-ft. Richardson mulch, good condition; 22-ft. JD rolling harrow, field ready. 580-497-2106.

IHC Farmall 186 hydro, burned, 250 hours on hydro rebuilt, main fire in front of hydro; Kneib popup hay loader, good; LR 2 JD side delivery rake, good. 918-967-8435.

'98 Hook custom 2-horse slant, single axle gooseneck trailer w/walk-in front dressing room, rear tack. Excellent condition w/new paint, \$4,500. 918-244-5531.

Old farm machinery - H IHC, WD Allis, '47 Ford truck, iron wheels, wagons, antiques, collectibles. 05-396-232.

JD Gator with less than 50 hours with dump bed, new, shop kept, \$5,200 new asking \$4,000. Karl, 405-222-3756.

'53 Super M Farmall, new front tires, new wiring, new seat, painted 3 years ago, rear tires good, runs good. 580-726-2389, 530-0228.

Bac-A-Nut pecan picker, used one year, pull behind lawn mower or 4-wheeler. 405-665-5705.

'56 Chevy hay truck; '89 F350, 460, AT, 4x4, flat bed, hay spike; '91 F150 XLT, 302, SB; paint, horse, tractors, trailers, equip. 405-391-3688.

Horse-drawn lister, horse-drawn disc, blower for old forage, 6-ft. 3point disc, 3-point post hole digger, Service 5-ft. Brushog, 400 ft. of chain link 4-ft. fence. 580-677-9986, 405-756-6251 cell.

WW gooseneck stock trailer, 16 x 6, like new, used very little, \$3,500. 405-969-2803.

656 Int. PS WF, \$3,250 OBO. Super C, new paint, runs good, \$1,500 OBO. 404 Int., new paint, WF, new tires, \$3,250; C Farmall, runs good, \$900. 918-352-2966.

## LIVESTOCK

Guard donkeys, \$265 each. 405-224-1222.

Three head of buffalo - a bull, female, yearling - female springing with second calf, \$2,000. 918-962-3628.

Chicks and chickens for sale. Want peacock chicks or eggs for hatching. 405-279-2177 after 5 p.m.

Corriente steers, heifers, bulls for sale. 405-214-8772, 275-7250.

New Zealand rabbits, bunnies, all sizes available. 405-694-3546.

14-year-old ugly bay gelding, 14.2H, used by children, walk/trot, all current, \$6,000. '89 bay Paint mare, big, gentle, \$2,500. Welch, 918-233-7012.

Reg. red Limousin bulls, gentle, low birth weights, yearlings, excellent condition. 580-564-4608.

Burney Show Pigz - validated, qualified herd, spring and fall litters. 580-245-2225, 870-784-0463.

Serviceable age Angus, Maine bulls; Will F.T. Tandy 1000 computer, printer, used very little; 6-ft. used creosote posts. 405-381-4307.

AQHA yearling filly, Hancock bloodlines, halter broke, \$750 OBO; weanling Palomino Hancock filly, available in August, \$1,000. 580-465-0376.

Board-A-Cow, complete year-round care for 25 to 50 head. NRHC, Inc., 918-967-8435.

Double Tough Harlan, triple bred Harlan buckskin stallion, \$400 LFG. 918-762-3769.

Angus bulls, heifers, 8-18 months old; 6 bred heifers. Angus business 50 years in same location. 580-456-741.

Reg. Beefmaster bulls, show heifers, cows. Great pedigrees/bloodlines, many are polled, red. Double Deuce Beefmasters, 918-253-8680.

Beefmaster bulls, females developed on forage to perform in the real world, practical cattle with proven performance. Simon Creek Beefmasters, 580-668-2523. Two world-class stallions, son of High Brow CAT and Mr. Dual Pep, standing. Also mares, yearlings, colts. 918-689-7526.

Ten Boer does, red heads, \$1,500; others available. Running with 100% Boer buck. Henryetta, 918-652-2860.

Reg. Limo bulls, heifers. Black, red, polled, growthy, gentle, service age, exc. qual. Hayhook Limousin, Lexington, 405-572-7648, 306-5202.

AQHA foundation broodmares, 2 year olds and yearlings, grays, sorrels, palominos. Blue Valentine breeding, \$750 up. 918-464-2367.

Reg. Paints: stallions, fillies, colts. Smooth N Easy, Dash for Cash, Doc Bar breeding. Black/white, bays, solids, weanlings to 4 year olds, fair prices. 405-262-8499.

Miniature horse, donkey auction Sept. 23 at 1 p.m., Grady County Fair Park, Chickasha. 405-381-4500.

Reg. Black Angus cows, calves: 10 heifers to calve in spring, \$11,000; 11 bred fall cows, \$13,500; 16 older cows w/calves, 3-in-1 package, \$22,000. Osage County, 918-538-2398.

Big, stout Limousin bulls. Low birth wts., gentle, growthy. Kusel bulls have won more gain tests nationwide than any Limousin herd. Fancy show calves, bred cows, bred heifers, pairs. John Kusel, Kusel Limousins, Ft. Cobb, 405-643-2884.

## MISCELLANEOUS

**AG APPRAISER -- Earn up to \$65,000 per year, part time. If you have a livestock or farm equipment background you may qualify to become a Certified Agricultural Appraiser. For free information please call the American Society of Agricultural Appraisers (800) 488-7570 or visit [www.amagappraisers.com](http://www.amagappraisers.com)**

**TURTLE & BREAM Traps. Traps that really work. Free Brochure. Smith Mfg, 5896 Nuthatcher Rd., Gilmer, TX 75645 [smithmfg@aol.com](mailto:smithmfg@aol.com)**

**Meat Grinders, Cubers, Butcher Supplies, Catalog \$2.00. Home Processor, 4501 Ledan Rd. Ext., Gainsville, GA. 30506, 770-535-7381, [www.HomeProcessor.Com](http://www.HomeProcessor.Com)**

**SUSPENDERS WITH PATENTED "No-Slip Clip."**

**Free Catalog. 800-700-4515, [www.suspenders.com](http://www.suspenders.com)**  
Compare our prices before you buy. Carver Monuments. 405-932-4398.

Discounts for Farm Bureau members on professionally installed seamless aluminum guttering. Choose from either 5- or 6-inch guttering. Free, no obligation estimates. 405-760-4038.

The skylight protector protects skylights from hail, golf balls, falling ice or debris damage, reduces noise from falling nuts, acorns, pine cones. 2x2 and 2x4 sizes. CCobb, Inc., 580-362-3201, [skylightprotector.com](http://skylightprotector.com)

Dichroiz fused glass jewelry. Have a party at your home, 10% of sales go to free jewelry to you. sueaw@junio.com, 918-592-1614.

Quickie V-121 electric wheel chair, charge, book. \$400. 405-372-615.

2 MTD riding lawn mowers, both exc. cond., 12 & 18 HP, 42 & 48 inch, new batteries, \$400 & \$600 OBO. 405-350-0705.

B-Line quilting frame, brand new, never used, everything but machine and table. 580-226-3057.

Several tons of gravel at NW 23rd, 1 mile east of Page Airport. 405-720-9198.

Fairbanks platform scale, extra weights, heavy duty, EC, \$150. 981-331-8581.

Howard Roofing & Painting, serving Stephens County area, free estimates. 580-439-6283, 467-8606.

Stationery bike, 2 months old, GT30 ProForm with heart, pulse rate, calorie rate, 4150. 580-618-3029.

Hair salon dryer chair with Venus plus dryer, black, absolutely new, never used. Paid \$420, sell for \$300. 580-772-5982.

New 14-inch youth roper, \$1,600. Custom made w/rawhide covered tree, quality leather, rear wood lining. [myerssaddle.com](http://myerssaddle.com), 918-534-1237.

Poultry water: Reduce mortality, increase feed conversion. Research at [eucomail@peoplepc.com](mailto:eucomail@peoplepc.com), 888-460-7554.

Country Flea Market, 1,000s of unique items, appliances, furniture, tools household, collectibles. 1-40 & Exit 23, 580-928-3200.

Great business opportunity. Concession trailer, big profits on your schedule, completed equipped, ready to make money. 1 owner, gently used, \$23,000. 580-332-1170.

Juneiva Skin Care products, free catalog, 877-332-7697. [Juneiva.com](http://Juneiva.com) or [info@juneiva.com](mailto:info@juneiva.com)

2 church pews, lovely, padded, mint condition, solid oak, 14 feet long. 918-247-6387.

Certified Organic. Extensive range of skin, body, hair, oral and health care products. [hardrockorganics.com](http://hardrockorganics.com)

Pure Wyoming benonite, \$7/sack - 5 sacks; '58 Jeep, \$2,500. 580-889-6595.

'91 Elkhorn p/u camper, full self-contained, fits long bed p/u, \$3,500. 405-919-5007.

Antique claw foot sitting tub, 48 inches long, good condition, \$75, you pick up. 580-726-2864.

Joe Weider 8630 training system, \$250; basketball backboard, goal, \$20; Vintage exercise bike, \$20; small use Kenmore water softener, \$60. 405-964-5501.

Nice square dance dresses and petticoats, size 12; Smith Corona correctable electric typewriter. 918-647-4697.



Two brand new arch-top thermal windows, 69" tall, 43" wide. Retail \$450 each, \$650 for both. 918-623-0582, leave message.

100s of bound area rugs, several rolls of nearly new carpet for 77¢ per sq.ft. Sulphur-Davis, Kevin, 580-618-4600.

Propane tanks: 1,000-gal. rebuilt, \$975; 500-gal. rebuilt, \$475; 250-gal. rebuilt, \$450. Other sizes, load lot pricing, delivery available. blttanks.com, 405-375-4189.

Stanley Home Products, Fuller Brush. House cleaning products, personal products, degreasers, Germtrol, kettle cleaners, colognes, lotions, hair brushes, brooms, mops, brushes, deodorizers, oxycleans, vitamins. Cheyenne, 580-497-2249.

Oklahoma Extension cookbook, Garvin County Cooks for the Millennium, chosen 4th of top 10 favorite cookbooks among Oklahoma cooks. \$15 + \$2 S&H. 405-756-2823.

Tiara exclusive glass: ambers sandwich full set of 12, half price; lots of items on hand, book price. Martha Schutkesting, 1922 W. Elm, Enid 73703.

Large ice tongs, old, \$25; small corn sheller, \$25; Simmons hide a bed, \$50. 918-476-8729.

Old National Cash Register, brass, excellent condition, works, \$800 OBO. 405-282-1482, 826-1350.

Money-maker - concession mobile food unit. OK season to work is 6 months. Licensed in OK, worked in TX 7 years. 405-382-1593.

Watkins products available. Buck or Mary, 580-255-7639. Storage trailer, delivery available. 405-258-6559.

Learn stained glass, leaded and foiled, days/nights. Camille, 405-273-3700.

Nice 5-door reach-in cooler for store, fruit/vegetable stand, scales, birdbath, streetlights, patio set, fountain. New refrigerator system, 3 HP compression, 21,750 BT,

20 degrees or warmer; electric cart w/bed, needs battery; '54 5-window Chevy pickup, needs restored, no motor or trans., \$950. 580-658-5751, 658-3739.

Very fine old Curtis air compressor motor, most recent patent was 1921, single cylinder w/ 3x3.5 displacement, made by famous aircraft company in St. Louis, exc. cond., \$50. 405-751-0933.

Boat w/title, oars, wheels, \$125; '56 Singer, sews god, \$75; 2 12-volt solar cells w/auto shut-off, clamps, \$25. 405-382-9998.

'96 Procraft bass boat, custom trailer, 125 HP Mercury, garage kept, very low hours, excellent condition. 405-207-8899.

Crocheted names, \$3 per letter w/border. Family, wedding, taking Christmas orders. 580-563-9470.

10 sets scaffolding 5x5 w/7 ft. brace, \$149 per set; 8 inch casters with brake, \$25 each; walkboards, 7 ft., \$40; 5x5 base plate, \$3 each; 24 inch screwjack, \$22 each. OKC, 405-570-5400.

## REAL ESTATE

5 acres south of Bixby, Liberty Mounds, \$25,000. Liberty Schools in Okmulgee County. 918-366-0666.

Want older 2-stor home, big shop, hills, trees, etc. on paved road with good water, free natural gas at reasonable price. 580-363-7939.

40 acres at Bentley, \$1,500; 10,000 record collection all types, \$1 each if you take all; large house on Hwy 69/75, make good restaurant. 580-889-6951.

Waterfront lot on Lake Lawtonka at School House Slough, approx. 30x60 w/4x24 deck w/gazebo, full hook ups, very nice. Jim, 580-347-2622.

3 to 4-bedroom home on 1 acre w/30x40 shop building, nice cellar, quiet dead end street, \$150,000. 405-222-4801.

20 acres 3 miles north of Tahlequah, cleared, rolling to level, 6-inch rural water line on property. Beverly at ERA JH Realtors, 918-931-9434.

30 acre horse ranch, 3-bedroom, 2-bath house, 2 barns, 14 horse stalls, 3 arenas, 2 outdoor, 1 indoor, cross fenced. Asking \$145,000. 580-925-2221.

Sr. citizens, disabled adults: affordable 1 & 2-bedroom duplex apts., all electric, CHA, Caddo. goldenacres@duracom, 580-367-2695.

Foss Lake, 16x60 mobile home, 2-bedroom, 2-bath, 2-car or boat garage, lake view, handy to boat dock, quiet, immaculate area. 580-772-5982, 302-1936, 302-1391.

We purchase privately financed mortgages, contracts for deed, structured settlements. 405-262-0181.

40 acres near Westin Grove, Ark., w/seasonal creek, beautiful view w/lots of trees, hunter's paradise, asking

## PETS

AKC Daschunds, all coats and colors, puppies and young adults available. Pet and show quality, pups expected this fall. 580-369-5214.

UKC J.R. Terrier pups, the best all around dog breed. Very trainable, great with kids. 918-479-8395, leave msg. Fox Terrier Toy pups, UKC, AKC, s/w, tan/white \$350, tri-color, \$200. 580-363-4676, 716-0907.

Chocolate Lab pups, full blood, 8 weeks, adorable, great family dogs, \$300. Cement, 405-224-6839.

English Bulldogs born Sept. 20, large litter, good bloodlines, home raised, great Christmas gifts. 918-473-6743.

# Country Classifieds

2501 N. Stiles • Oklahoma City, OK 73105

Each Farm Bureau member family is limited to ONE free classified ad per issue. This form must be used. No call-in ads will be accepted. The length of the ad can not exceed the number of lines on this form. Ads run only one time.

All information below must be completed.

Name \_\_\_\_\_

OFB Membership Number \_\_\_\_\_

Address \_\_\_\_\_

City \_\_\_\_\_ State \_\_\_\_\_ Zip \_\_\_\_\_

Phone (\_\_\_\_\_) \_\_\_\_\_  
Area Code

Please type or print legibly.

\_\_\_\_\_  
\_\_\_\_\_  
\_\_\_\_\_  
\_\_\_\_\_

Deadline for the next issue is December 15, 2006.



## Double your classified ad exposure\* . . . . .

Online classified advertising is FREE to all Oklahoma Farm Bureau members. No computer? No problem? Fill out this form. Mail it to: The Sale Ring, 2501 N. Stiles, Oklahoma City, OK 73105. We'll place your ad online for you.

Name \_\_\_\_\_

OFB Membership Number \_\_\_\_\_

Address \_\_\_\_\_

City \_\_\_\_\_ State \_\_\_\_\_ Zip \_\_\_\_\_

Daytime Phone \_\_\_\_\_

I agree to be bound by all terms and conditions of The Sale Ring advertising agreement.

Signature \_\_\_\_\_

Ad Categories (Circle One): Automotive, Business Opportunities, Farm Equipment, Hay, Hunting, Livestock, Miscellaneous, Pasture Rental, Real Estate, Services or Tools.

Description: \_\_\_\_\_

\_\_\_\_\_

\_\_\_\_\_

\_\_\_\_\_

I would like my ad to run (Circle One): 30 days 60 days 90 days 120 days

\*Placing an ad in The Sale Ring does not place that same ad in Oklahoma Country Classifieds. Both ads must be submitted separately.

## Kitchen

**SESAME BUTTERFLY CHOPS**

- 4 boneless pork loin chops, butterflied (about 1 pound)
- 1 teaspoon sesame oil
- 2 tablespoons sesame seed
- 1 teaspoon dry ginger
- 2 tablespoons soy sauce
- 1/4 cup dry white wine
- 1/2 pound fresh mushrooms, sliced
- 2 green onions and tops, sliced
- 1 teaspoon butter



Heat sesame oil in nonstick pan over medium heat. Add chops and brown, sprinkling with sesame seed and ginger. When both sides are browned, add soy sauce and white wine to skillet, add mushrooms and onions; stir gently to saute, 1-2 minutes. Remove chops to serving platter. Add butter to pan, stir constantly to deglaze pan. Pour mushroom-onion sauce over chops to serve.

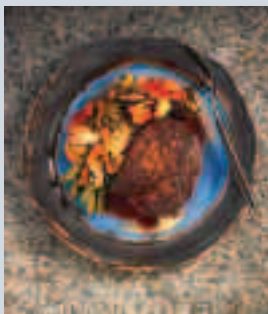
Servings: 4; Prep Time: 20 minutes

**SEARED MARINATED BALL TIP STEAK** Serves 12

- (6 oz.) Certified Angus Beef® sirloin ball tip steaks
- 5 tablespoons olive oil
- 1 tablespoon Dijon mustard
- 1/2 tablespoon cracked white pepper
- 1/2 serrano pepper, cleaned, minced
- 1 rosemary sprig, needles only, chopped

**Pepper and Artichoke Compote:**

- 4 each, large red, yellow and green bell peppers, cleaned, washed, roasted, peeled and cut into large dices
- 6 artichokes, whole cleaned, peeled, completely trimmed, use bottoms only, cut into quarters
- 8 tablespoons olive oil
- 1/4 cup red onions, diced
- 4 cloves garlic, minced
- 1/2 cup shiitaki mushrooms, sliced
- 1 cup red wine, high quality
- 1 cup veal jus lie
- salt and pepper to taste
- 1 tablespoon whole butter
- 3 tablespoon chives, finely snipped



Place steaks in shallow pan. In small, stainless bowl, combine oil, mustard, pepper, serrano and rosemary. Brush steaks with this mixture and marinate for 1 hour.

In large, non-stick skillet over medium-high heat, pan sear steaks until evenly browned and desired doneness. Serve steaks with roast pepper artichoke compote and herbed potatoes.

Clean, wash, roast and peel all bell peppers, core and seed. Cut in large dice, use flesh only, set aside. Clean, peel, wash artichokes and cut into quarters, use bottoms only. Brush with 2 tablespoons olive oil, place in hot skillet and roast artichokes in 350° F oven until evenly browned. Toss frequently.

In large rondeau, heat remaining oil. Sweat red onions and garlic until translucent, add mushrooms, sauté over medium heat. Deglaze with red wine, reduce by half, add veal jus lie. Simmer gently, add peppers and artichokes. Simmer for 20 minutes, adjust seasoning with salt and pepper. Finish with whole butter and chives. Keep warm and serve compote with seared steak.

\$1,990/acre. '46 Chevy 1.5-ton truck, will run, \$2,995. 405-612-4938.

Gorgeous 2-bedroom, 2-bath, CHA, custom kitchen cabinets/woodwork, closet storage galore, home completely renovated inside and out, mile from boat dock on Lake Altus. 580-706-0101, 782-3446.

Perfect location in Cache to build home on wooded lot in Rock Creek, for sale by owner. 580-248-0202.

160 acres in Garfield County, wheat base, pasture, some bottom land, creek runs through it. Ochs Real Estate, 405-282-0404.

4-bedroom, 2.5-bath stone/frame home on 45 acres MOL, 2 ponds, all paved roads, out of Kellyville, 20 minutes to Tulsa, \$280,000. 918-247-7678.

5.37 acres w/4,867 sq.ft. home, 5-bedroom, 4-bath, 3 living areas, 2 dining areas, 2-car garage, county at its best, \$380,000. Possible purchase of additional 20 acres w/40x80 barn. Karen, Ochs Real Estate, Guthrie, 405-832-4027.

Owner financing on 40 acres 30 minutes southeast of downtown OKC. 405-273-0680.

For rent in Branson, Miss., 2-bedroom, 2-bath condo, 3 nights, 4 days, \$250. 918-456-1605 weeknights only.

Country living minutes from Pryor, Claremore. Beautiful large trees surrounding 1/2 acre lots w/3-bedroom, 2-bath homes, \$115,000, 100% financing available. 918-260-3557.

**RVs, MOBILE HOMES**

'88 Bravo 28-ft. motor home, new refrigerator, new Toyo tires, generator, sleeps 6, great condition. 580-497-2802, kimzey@dobsonteleco.com

Chinook 21 Concourse motor home, 9,000 miles by original owner, self-contained, has every available option. 405-759-2616.

'98 36-ft. Dutchman travel trailer, elec. Lift, L/S front kit., L/frig., table 4 chairs, tub/shower, micro. AC, TV, awning, H/bed, queen bed, elec. Lift chair, \$12,000. 918-835-0495.

'05 32'4" exterior length 5th wheel Paradise Pointe by Crossroads, 3 slides, 2 ACs, queen bed, H bed, 2 recliners, tan decor, TV, DVD, 3,500 miles, \$30,000. 918-462-7490.

**WANTED**

**I BUY BLACKSMITHING TOOLS AND EQUIPMENT. MIKE GEORGE, 1227 4TH ST., ALVA, OK 73717, 580-327-5235.**

**WANTED OLDER VEHICLES, CARS, PICKUPS, VANS, WAGONS, 1900s THRU 1960s, GAS PUMPS, TAGS. 580-658-3739.**

Want to purchase oil, gas, mineral rights, producing or non-producing. 800-687-5882, 580-223-0353.

Want 2 rear tricycle spoked wheels, 7-inch diameter for half-inch axle. 918-253-4782.

Retired man would like to have permission to hunt on your land. Bill at 405-282-0113.

Want '50s Alice Chalmers CA wide front end tractor in good working condition. 580-716-3250.

Want dead or running Oliver, John Deere, Intl. Case, Ford, Moline, Allis tractors. 405-352-4816.

Want to buy vintage gas pumps, signs, lubesters, trans. pumps or other gas station items. 580-639-2776.

Want to locate photographs of Mounds and Beggs Frisco depots. 918-827-5515.

Want left front fender for '60 F700 Ford truck or front clip. 918-333-3974.

Collector paying cash for antique fishing lures, tackle; also wood duck decoys. Troy, 800-287-3057.

Want women for a career in skin care industry. Work from home for the best cosmetic company worldwide, \$55 startup. Senegence.com/face2face



**Serving All of Oklahoma's  
Insurance Needs Since 1946**

**Auto • Home  
Farm • Crop  
Boat • Business  
Renters • Life  
Health • Annuities**

**OKLAHOMA FARM BUREAU  
MUTUAL INSURANCE COMPANY**

[www.okfarminsurance.com](http://www.okfarminsurance.com)





# Conserve Energy With Alcoa Siding

**\*CUT FUEL COSTS! \*CUT HEATING COSTS! \*CUT COOLING COSTS!**

## Alcoa Steel & Vinyl Siding America's At Home With Alcoa

Yes! Energy savings over a short period will more than pay for the new siding investment in your home.

Does not absorb or retain moisture like wood.

Does not support combustion.



Stays beautiful wherever you live!

Retains beauty year in, year out.



Does not peel, flake, corrode or rust. Easy to clean—simply hose down.

Marks, scars, abrasions don't show. High impact-resistant.

White & 12 decorator colors. Never needs paint—durability built in not painted on.

Insulates against cold or heat.

Goes up easily over wood, asbestos, stucco or masonry walls.

Protect your investment in your home! Improve its value!

Muffles outside noises, assures a quieter, more livable home.

Permanently protects & beautifies your home.

Resists damaging effects of acids, salt, water, sun, rain, oil, etc.

Maintenance free — the BEST buy in today's home covering market!

Completely covers split, warped, faded or peeled outside walls.

Here are the names of just a few of your Farm Bureau neighbors who are enjoying the beauty & comfort of Alcoa Siding products. Feel free to check with them.

**Benny Rogers**  
P.O. Box 883  
Perry, OK  
**Bob Doley**  
Rt. 2, Box 119  
Perry, OK  
**Carl Washburn**  
10456 N.W. 20th  
Yukon, OK  
**Don Reinwater**  
5710 Willow Dr.  
Norman, OK  
**Nell Roberts**  
1499 Charles  
Norman, OK  
**O.S. Puckett**  
290 Elm  
Meyersville, OK  
**Eddie Hault**  
P.O. Box 101  
Stanley, OK

**Forest Masters**  
317 W. Sheridan  
Kingfisher, OK  
**Beryl James**  
8512 W. Britton  
Yukon, OK  
**Shirley Coffey**  
5800 N.W. 48th  
Oklahoma City, OK  
**Linda Sifton**  
P.O. Box 100  
Binger, OK  
**Delores Knapik**  
414 W. Birch  
Enid, OK  
**Tim Cameron**  
Rt. 1, Box 85  
Oklahoma, OK  
**Jack Steele**  
119 Thompson  
Kingfisher, OK

**Steve Leek**  
115 S. Flynn  
Culbert, OK  
**Jerry Bonds**  
63125 Gregory Rd.  
El Reno, OK  
**Clark Graham**  
312 N.W. 1st  
Moore, OK  
**Carl McKinney**  
P.O. Box 592  
Enid, OK  
**Greg Riggs**  
18600 N. Astor Way  
Deer Creek, OK  
**Daniel Garrett**  
3009 S. Jensen  
El Reno, OK  
**Mike Yousey**  
2552 S.E. 12th  
Marsh, OK

**Al Castro**  
4801 Winway Circle  
Norman, OK  
**Don Blain**  
308 E. Jansen  
Midwest City, OK  
**Kenneth Azlin**  
P.O. Box 901  
Seminole, OK  
**Gerald McDaniell**  
14714 Key Ridge Cir.  
Newalla, OK  
**Mike Linke**  
201 Owen  
Mustang, OK  
**Mike Lee**  
Rt. 4, Box 183  
Tuttle, OK  
**Larry Faust**  
315 M. 3rd  
Watonga, OK

**Stirling Miller**  
912 Kansas  
Chickasha, OK  
**Hervachel Nichols**  
Route 1  
Pague, OK  
**Jerry Haynes**  
P.O. Box 208  
Cashlon, OK  
**Charles Frank**  
1998 Brook Hollow Cir.  
Stillwater, OK  
**Lynn Luker**  
700 W. Jackson  
Crescent, OK  
**Jim Youngs**  
1201 Clearview  
Mustang, OK  
**Torenia Richardson**  
P.O. Box 381  
Ponca, OK

**Cade Boswell**  
Rt. 1, Box 7  
Cottigton, OK  
**Randy Plant**  
18701 Garden Ridge  
Edmond, OK  
**S & J Tire Co.**  
Hwy. 81  
El Reno, OK  
**Don Pinkerton**  
7521 N.W. 42th  
Oklahoma City, OK  
**Leslie Bradford**  
Rt. 2, Box 288  
Watonga, OK  
**Sharon Graham**  
2821 Bella Vista  
Midwest City, OK  
**Jessie Bryant**  
1735 N. Country Club  
Newcastle, OK

**Keller Reed**  
820 N. McArthur  
Oklahoma City, OK  
**Larry Smith**  
Rt. 2, Box 122  
Kingfisher, OK  
**Mokey Brown**  
1705 Country Club  
Newcastle, OK  
**Barth Construction**  
Lot 6 West Turkey Hollow  
Stillwater, OK  
**Jeff Palmer**  
822 S. 6th  
Kingfisher, OK  
**Stirling Miller**  
Rt. 2, Box 129A  
Perry, OK  
**Mike Nenasch**  
Rt. 1, Box 30  
Perry, OK

**Willa Clay**  
1845 N.W. 29th  
Newcastle, OK  
**Don Jantz**  
Rt. 3  
Enid, OK  
**Dawn Faust**  
8029 Lyric Lane  
Midwest City, OK  
**Yvonne Zure Mallen**  
Rt. 4  
Cherokee, OK  
**Jim Nichols**  
4737 Crest Pl.  
Del City, OK  
**Glenda Erick**  
2801 N.W. 138th  
Oklahoma City, OK  
**Teresa Parham**  
120 Chickasaw  
Yukon, OK

**Rose Minneth**  
5409 N.W. 69th  
Oklahoma City, OK  
**Mark Kelley**  
3421 N.W. 67th  
Oklahoma City, OK  
**Richard Brown**  
Rt. 1, Box 151  
Geary, OK  
**Dwayne Smith**  
475 S.W. 15th  
Newcastle, OK  
**Hansley Hinesgard**  
9100 Whitetail Cr.  
Oklahoma City, OK  
**Don Westerman**  
3458 N. Red Rock Rd  
Yukon, OK  
**Mike Nichols**  
Route 1  
Pague, OK

### Check these features

- No artificial look
- No warping in summer
- Won't rot or peel
- Won't absorb or retain moisture
- No exposed nails
- Won't break up in hail
- Won't dent like aluminum
- Static electricity attraction free.

**Farm Bureau members receive a 33 1/3% discount off nationally-published retail prices. Now in effect for Oklahoma! Call 405-721-2807 or complete coupon below.**

**NO OBLIGATION!**  
Buy directly from the company owners—in the siding business since 1937! No middlemen involved. We can beat most any deal. Buy today before costs soar higher!  
**TERMS AVAILABLE**  
Special discount for FB Members Only.  
**NOTICE**  
Siding materials sold on an applied basis only.

OK! I want more information, facts, figures, estimates and color pictures of completed jobs. No obligation. You be the judge! Send coupon immediately! One of the OWNERS of the company will personally contact you! No high pressure. Just the facts for your consideration! Act NOW! You'll be glad you did!

Name \_\_\_\_\_  
Address \_\_\_\_\_ City \_\_\_\_\_  
Telephone \_\_\_\_\_ Best Time To Call: \_\_\_\_\_ A.M. \_\_\_\_\_ P.M.  
If Rural, Give Directions \_\_\_\_\_

**M. RHODES COMPANY** 6408 N. Libby  
Oklahoma City, OK 73112